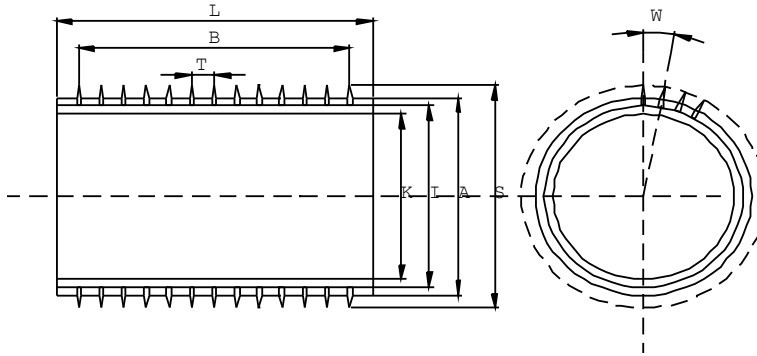


Questionnaire Spiked Rollers

Type of machine		Year	
Manufacturer			
Application			



L: Roller length	<input type="text"/>	mm		
B: Pinning width	<input type="text"/>	mm		
I: Ring inner diameter	<input type="text"/>	mm	Ring material	<input type="text"/>
A: Ring outer diameter	<input type="text"/>	mm		Standard: <input type="text"/>
S: Diameter over the pins	<input type="text"/>	mm		Special design: <input type="text"/>
K: Core diameter	<input type="text"/>	mm	Core material	<input type="text"/>

Pinning:

D: Pin diameter	<input type="text"/>	mm	Offset between pin rows	<input type="text"/>	Number of individual rows	
T: Pin spacing	<input type="text"/>	mm	1 = no offset, i.e. rows behind each other			
N: Pin length	<input type="text"/>	mm	2 = staggered			
F: Pin protruding length	<input type="text"/>	mm	More than 2: spiral form			
W: Angle between pin rows	<input type="text"/>	degrees	1:		2:	
U: pin angle (vertical = 0°)	<input type="text"/>	degrees				
R: No. of pin rows (circumference)	<input type="text"/>					
P: Number of pins per row	<input type="text"/>					

Specialities:
e. g. pins not required, high temperature range, contact with food

Inquiry from	<input type="text"/>
Contact person	<input type="text"/>
Telephone	<input type="text"/>
Telefax	<input type="text"/>
Street	<input type="text"/>
Zip code/location	<input type="text"/>

To: **tambula**
 Textilmaschinenteile GmbH
 Robert-Bunsen-Straße 15
 36179 Bebra
 Postfach 12 48
 36172 Bebra
 Tel: 0049-6622-919035
 Fax: 0049-6622-7480
 E-Mail: verkauf@tambula.de